

2025 FALL SEMESTER



# WELCOME GUIDE

FOR ACADEMY  
PARENTS AND  
STUDENTS

Dear Parents and Students,

We're looking forward to seeing you on campus very soon! This guide will help you complete the steps necessary before you arrive on campus for the 2025 Academy fall semester.

You can find additional information such as [what to bring](#), tips for parents, and more information about our programs on our website: [Student Life at Idyllwild Arts](#).

If you have any questions about the information in this guide or need help with any steps, please contact [Academy@idyllwildarts.org](mailto:Academy@idyllwildarts.org).

I'm looking forward to welcoming you to Idyllwild Arts Academy!

Sincerely,

Jason Hallowbard  
*Head of School*

## TABLE OF CONTENTS

[Student / Parent Orientation and Arrival](#)

[Student / Parent Handbook and Our Values](#)

[Checklist](#)

[School Google / Email Account](#)

[Idyllwild Arts Account](#)

[Medical Requirements - Magnus Health Records](#)

[Incidentals - Campus Card Account](#)

[ID Badge](#)

[Travel Information](#)

[Chinese / International Parent Liaisons](#)

[Visas](#)

[Dorm, Roommate, and Advisor Assignments](#)

# STUDENT / PARENT ORIENTATION AND ARRIVAL

**New ELL-Enrolled International Students** should arrive on Sunday, August 17th

**Returning ELL-Enrolled International Students & Mainstream English International Students** should arrive on Saturday, August 23rd.

**New and Returning Domestic Students** should arrive on Sunday, August 24th.

Please see the travel information section later in this document for more information on school transportation, times, and costs.

**Day students** should plan on participating in any orientation activities starting on Sunday, August 24th.

College counselors, department chairs, and administrators will be available.

# STUDENT / PARENT HANDBOOK AND OUR VALUES

By enrolling at Idyllwild Arts, every student agrees to abide by the expectations and honor the values in our Student/Parent Handbook. Please read the Handbook before arriving - you can find it on our website [here](#).

**OUR MISSION STATEMENT IS: CHANGING LIVES THROUGH THE TRANSFORMATIVE POWER OF ART.**

Idyllwild Arts Academy (IAA) students know “who they are and what they stand for.” They are young artists and scholars who strive for excellence and aspire to the core values listed below.

Committing yourself to sharing in these common values and striving to honor the intention of the quote in Krone Museum—“We are in service to the creative spirit”—will make following the rules at Idyllwild Arts Academy a natural and straightforward achievement.

**INTEGRITY** - IAA recognizes the integrity of the individual and the larger community. Academy students strive to be sound, complete, unimpaired, and whole individuals who acknowledge the importance of matters affecting the entire School.

**RESPECT** - Respect for others requires you to hold everyone in high regard and not interfere with their beliefs and pursuits. IAA is a diverse community composed of artists with a broad variety of talents from different cultures and with different identities.

**RESPONSIBILITY** - The IAA community asks us to make daily large and small decisions. These decisions, often made independently, must be made with careful consideration. Each decision carries with it an action. We are accountable for those actions.

**ASPIRATION** - In the context of life at IAA, aspiration refers to the strong desire to live in the best possible way, cultivating ambition based on the values of altruism, creativity, mindfulness, and intention.

**PASSION** - Passion is the intense enthusiasm, strong or even extravagant fondness and desire an artist has for his or her art form. It is the driving force behind our art. Passion is a deep, insatiable need to practice art. It manifests in the inability to stop creating art. Our lives as artists are imbued with passion.

**IMAGINATION** - Imagination is a vital part of an artist’s existence. It is the source of our creative genius.

**POSITIVE CONTRIBUTION TO THE COMMUNITY** - IAA is a community that grows and succeeds because of its members’ contributions and cooperation. The behavior of each person directly impacts the School as a whole.

# CHECKLIST



Here is a checklist to help track everything that needs to happen before arriving in January. All requirements are detailed in this document.

For international students - apply for a visa, if needed, immediately

Parents and students read the Student/Parent Handbook

Students log in to their school Gmail account and check it regularly

Parents log in to their Idyllwild Arts Account and check it regularly

Students log in to their Idyllwild Arts Account and check it regularly

Parents of new students request an official final transcript from their student's transfer school be sent directly from that school to Maggie Lam at [mlam@idyllwildarts.org](mailto:mlam@idyllwildarts.org).

Parents complete their child's Magnus medical information account. This includes making sure their child is up to date on all immunizations. **Completing your Magnus account should be one of your top priorities, as students can't participate in our programs / stay in the dorms until they have satisfied all medical requirements.**

Parents set up their child's Campus Card incidental account.

Parents or students send a current picture to [academy@idyllwildarts.org](mailto:academy@idyllwildarts.org) for their ID badge.

Students who know their travel plans and need school transportation from the airports should email [awaypermissions@idyllwildarts.org](mailto:awaypermissions@idyllwildarts.org) by July 10th. We service LAX, PSP, and ONT airports only.

Parents should review their child's schedule (can be viewed in their Idyllwild Arts Accounts after August 8th) and purchase books and necessary supplies. Please reference the 2024/2025 Book List [here](#).

Parents and students should review the student life section of our website. Boarding students should look at our [lists of items to bring and not to bring](#).

All students should have a guardian on file that can pick them up from campus within 48 hours in case of an emergency.

All students are required to have a cell phone with service in the United States and their own laptop.

# SCHOOL GOOGLE / EMAIL ACCOUNT

Every student is given a school Gmail account when they enroll and is expected to check their email daily during the school year. Please make sure your child logs in to their account over the summer. Student IA Gmail sign-in credentials and instructions will be sent out by our Information Technology (IT) department.

For your child to log in, have them go to [mail.google.com](mailto:mail.google.com) and enter the email address and temporary password in our welcome email. They will be prompted to change the password after logging in.

All faculty and staff use email as their primary means of communication with the students. Student services send information at the beginning and end of every week, and the school also uses email to communicate with students in case of emergencies. Students will need to plan to check their school email 3x/day.

Any questions about your school Google / email account, or technology on campus in general should be sent to [ithelp@idyllwildarts.org](mailto:ithelp@idyllwildarts.org).



# IDYLLWILD ARTS ACCOUNT

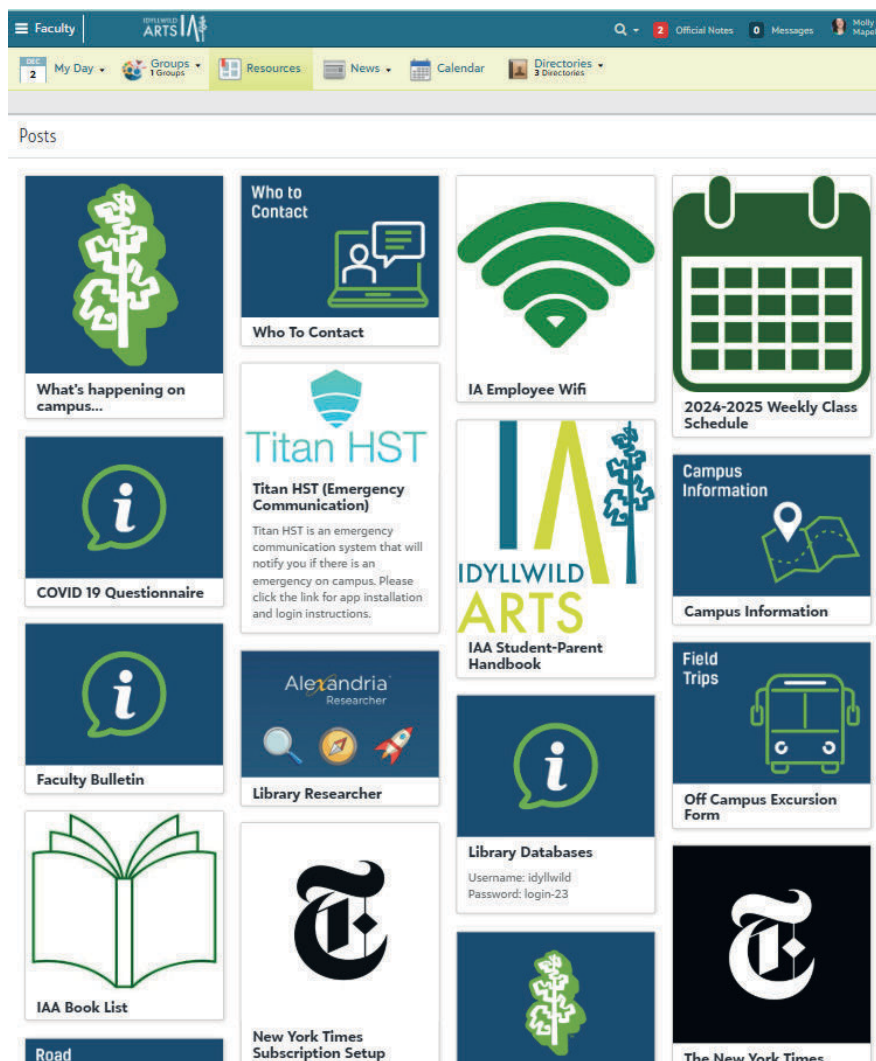
Parents were given an Idyllwild Arts Account during the application process, which can be accessed at [idyllwildarts.myschoolapp.com](https://idyllwildarts.myschoolapp.com). If you were not issued an Idyllwild Arts Account, you can email a request for one to [ithelp@idyllwildarts.org](mailto:ithelp@idyllwildarts.org).

Students use their school email address to sign into their Idyllwild Arts Account. Student IA Account sign-in instructions will be emailed out.

Parents - When you log in and click on your student, you can see their schedule, attendance, and grades throughout the year. Here is a short video for parents on getting started with their account: [Parent Account](#).

Students - when you log in, you will see a summary of your classes, grades, and attendance. If you click on your classes, you will get more information on each class, assignments, etc.

Both parents and students have Resource Boards in their Idyllwild Arts Accounts with links to helpful information:



# MEDICAL REQUIREMENTS - MAGNUS HEALTH RECORDS

Idyllwild Arts has partnered with Magnus Student Medical Records, an electronic system for tracking and storing student medical information. Parents use Magnus to upload proof of insurance, medical history, immunization records, physical exams, and medications. Parents must access their Magnus account through the Resource Board in their Idyllwild Arts Account at <https://idyllwildarts.myschoolapp.com>

- Log into your Idyllwild Arts Account at <https://idyllwildarts.myschoolapp.com>
- Select the resources tab.
- Select the link for Magnus Health.
- This will log you directly into your child's Magnus account.

**Every student must have a complete Magnus account before participating in our programs or moving into the dorms.** This includes proof of all immunizations required by the school, including [those required by California Senate Bill No. 277](#) (SB 277). Since we are a boarding school, we also require vaccines for Meningococcal (ACWY) and Hepatitis A. The immunization form with requirements can be downloaded [here](#) for your convenience.

Students missing any required immunizations upon arrival will have them done within 30 days of arrival at a local clinic and the student's insurance/account will be charged for those expenses.

**All New and Returning International Students:** The Health Center will enroll your child in the school's insurance and upload the insurance card into your child's Magnus account.

**New Domestic Students Insurance:** You must provide your insurance that will be accepted at the local clinic. Reach out to the Health Center at [hcnurses@idyllwildarts.org](mailto:hcnurses@idyllwildarts.org) if you have questions in regards to your insurance.

**Returning Domestic Students Insurance:** If your insurance is still active and current for the 2025-2026 school year, you may email us, and we will re-approve it. If it is not current, please update Magnus with your new insurance, or you can send me a picture of the front and back and I will add it to Magnus. Please reach out if you have any questions.

**All Returning Families:** All returning families must log into Magnus and update forms for the current 2025-2026 year. **Vital Health Record:** All your information is stored in the Magnus VHR section. Please click in each section and update any new information then click submit.

If you have any questions, please contact the Health Center team at [hcnurses@idyllwildarts.org](mailto:hcnurses@idyllwildarts.org).



# INCIDENTALS - CAMPUS CARD ACCOUNT

The following information will enable you to set up an "Idyllwild Bucks" incidental spending account for your child to use while they are attending Idyllwild Arts. Incidental accounts are separate from tuition accounts and are managed through our Idyllwild Arts "Campus Cardholder" website at [ia.campuscardcenter.com/ch/login.html](http://ia.campuscardcenter.com/ch/login.html).

An incidental deposit has been included in your enrollment agreement and will be applied to your student's incidental account. During the school year, if your child uses their deposit, you will be able to add funds as necessary. Accounts that have a \$0 balance will remain deactivated until funds are added. Any unused portion of the incidental deposit will be rolled over or refunded to families at the end of the year.

Once set up the Idyllwild Bucks incidental account can be used to pay for things on campus like books, supplies, transportation, field trips, postage, SAT exams, etc. Families can log in into their account at any time to see real-time charges that your child is making, as well as credits or payments made to the account.

To set up your account, go to [ia.campuscardcenter.com/ch/login.html](http://ia.campuscardcenter.com/ch/login.html) and on the right-hand side of the webpage, click the "Register Now" button to start the registration process.

1. Cardholder Registration Page
  - a. Enter your student ID number (This is in your Idyllwild Arts account, under student contact information)
  - b. Last Name - Enter student's last name
2. Create User Profile Page
  - a. Create your username
  - b. Create your password
  - c. Re-enter your password to confirm
  - d. Select a secret question from the drop-down list and provide your answer
  - e. Enter your email address
3. Cardholder Terms & Conditions Page: Upon review:
  - a. Click "Yes"
  - b. Enter Initials
  - c. Click "Accept Terms"

To add funds with a credit card to your "Idyllwild Bucks" account, login and click on "Add Value" and you will be prompted for credit card information.

If you are unable to successfully register, please contact the Idyllwild Arts ID Card Service Center by phone at (951) 659-2171 Ext. 2209 or email [studentbilling@idyllwildarts.org](mailto:studentbilling@idyllwildarts.org) for assistance.

# ID BADGE

Every student is required to wear an ID badge while they are on campus. Please send an unedited close-up photo of your head and shoulders against a light or neutral background to [academy@idyllwildarts.org](mailto:academy@idyllwildarts.org).

Here is an example of an acceptable ID badge photo:



## TRAVEL INFORMATION

Student Services manages all student travel - any time a student leaves campus, they must obtain away permission. Every away permission request goes to the student's art department chair, parents, and Student Services. This leave will be submitted in REACH. REACH is a comprehensive student management system designed especially for boarding schools.

If your student needs school transportation from the airport on arrival day, please email [awaypermissions@idyllwildarts.org](mailto:awaypermissions@idyllwildarts.org) to arrange for a school van to meet your student at the airport.

Below are the airports we provide service to for a fee.

- Palm Springs International Airport (PSP) - 1 hour 15 minutes away from campus
- Ontario International Airport (ONT) - 1 hour 45 minutes away from campus
- Los Angeles International Airport (LAX) - 3 hours away from campus

Travel Day costs \$175.00 per student, but this only applies if the departure times work with our bus/van schedule. If the arrival times are outside of our schedule, then we will have to charge according to our financial supplement. Please let us know if your child will be traveling alone as an unaccompanied minor.

Our drivers will accompany your child to the check-in desk and airport security in such cases. However, please note that this service may have an additional fee. Also, we request that you use either Palm Springs or Ontario Airport for this service.

## CHINESE / INTERNATIONAL PARENT LIAISON

Maggie Lam, [mlam@idyllwildarts.org](mailto:mlam@idyllwildarts.org), serves as our Chinese / International Parent Liaison. A message from Maggie:

亲爱的家长,  
您好。我是 Maggie Lam, 我们在学校担任行政辅助的工作。我是香港人, 我会说中文。如果您有任何问题, 请随时与我联系。我的微信ID是: MaggieLamIAA。

Dear Parents,

My name is Maggie Lam. I am in Academy administration. I am from Hong Kong, and I can speak Chinese. Please feel free to reach out to me if you have any questions. My WeChat ID is: MaggieLamIAA.

## VISAS

New international students should apply for a visa, if needed, as soon as they sign their enrollment agreement. All international students should ensure their passport/visa is current and will not expire during the school year.

Please contact Matthew Walker ([mwalker@idyllwildarts.org](mailto:mwalker@idyllwildarts.org)), our Manager of International Student Relations, with any visa questions or assistance you need.

# DORM, ROOMMATE, AND ADVISOR ASSIGNMENTS

All boarding students must complete the [Housing Questionnaire](#) to tell us about their housing preferences. The Assistant Head of School for Student Life and dorm heads will do their best to pair students based on their questionnaire responses. Students will find out their dorm and roommate assignments on arrival day.

Boarding students can find a list of what to bring and what not to bring on our website here: [Student Life at Idyllwild Arts](#). There is also a link to the list on the Resource Board of your Idyllwild Arts Account, or you can find it directly [here](#).

Every student is assigned a faculty or staff advisor who acts as a liaison between the student, parent, and the school. Advisors monitor progress in classes and programs, help students handle problems and reinforce our school values, offer counseling on classes and enrichment activities, and know where to refer students when they don't know the answer to a question.

Returning students will keep their current advisor. New students or returning students whose advisor is leaving will be assigned a new advisor during the first week of school.

For questions about the Advisory program, please contact [registrar@idyllwildarts.org](mailto:registrar@idyllwildarts.org).